

WATERFRONT



ROYAL ARSENAL RIVERSIDE

ROYAL BOROUGH OF GREENWICH, LONDON

I | II

Premium Apartments

2 BEDROOM DUPLEX
PREMIUM APARTMENT

TYPE 2.4.35
PLOT 5.14.86

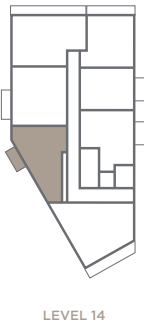
APARTMENT AREA	109.62 sq.m	1180 sq.ft
Living	5320mm x 4530mm	17'5" x 14'10"
Kitchen/Dining	5370mm x 3710mm	17'7" x 12'2"
Balcony	3365mm x 1665mm	11'0" x 5'6"

WATERFRONT AT ROYAL ARSENAL RIVERSIDE

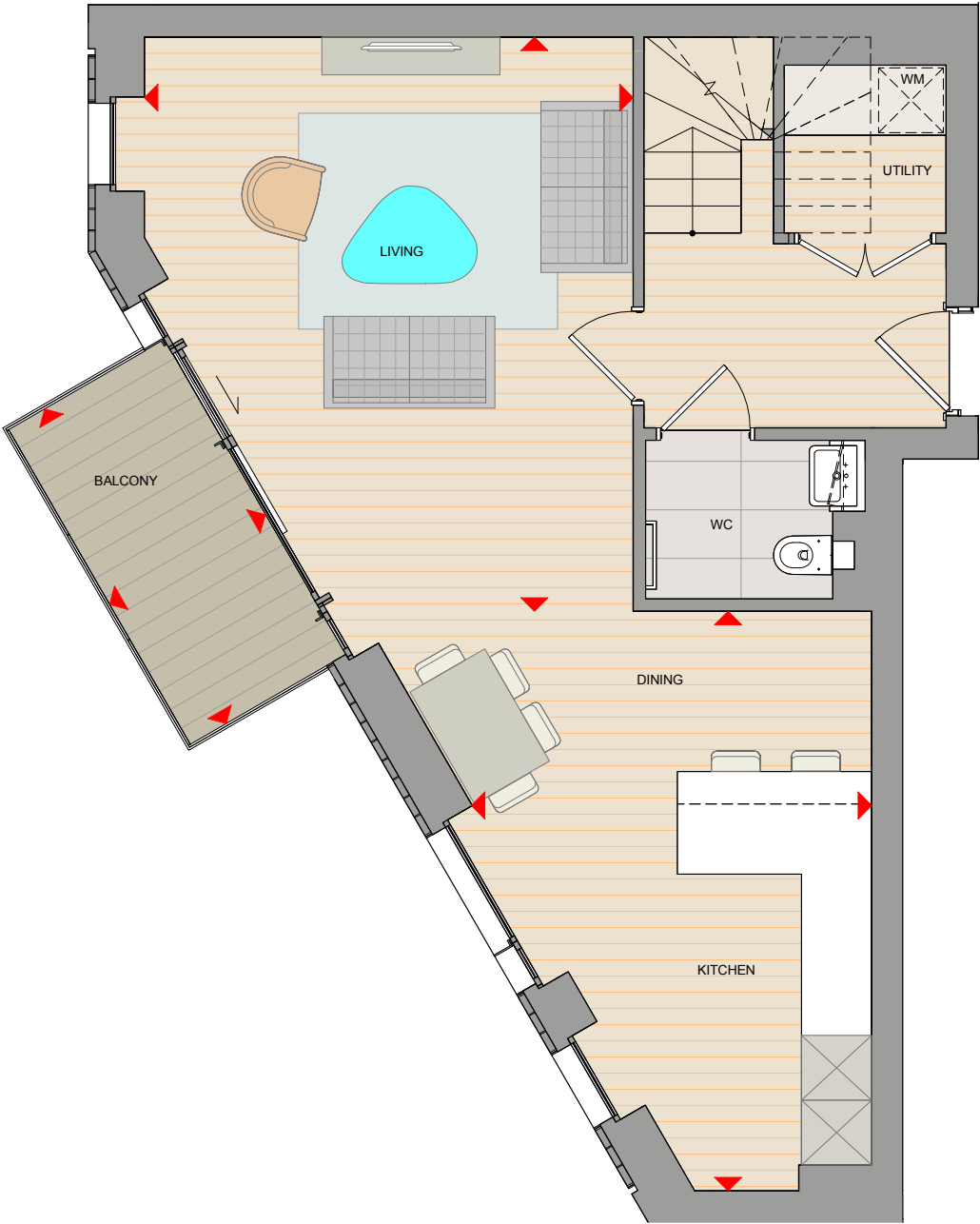
SITE LOCATOR



FLOOR STACKER



LOWER LEVEL



Apartment layouts provide approximate measurements and are indicative only. Dimensions, which are taken from the indicated points of measurement are for guidance only and are not intended to be used for carpet sizes, appliance space or items of furniture. Apartment areas are provided as gross internal areas under the RICS measuring practice. All measurements and areas may vary within a tolerance of 5%. Kitchen layouts are indicative only and are subject to change. All balcony dimensions and areas are approximate and may vary within a tolerance of 10% subject to detailed design.

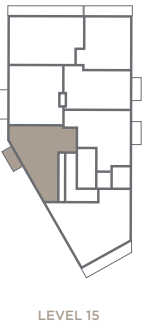
KEY WM Washing Machine
▶ Dimension Arrows

WATERFRONT AT ROYAL ARSENAL RIVERSIDE

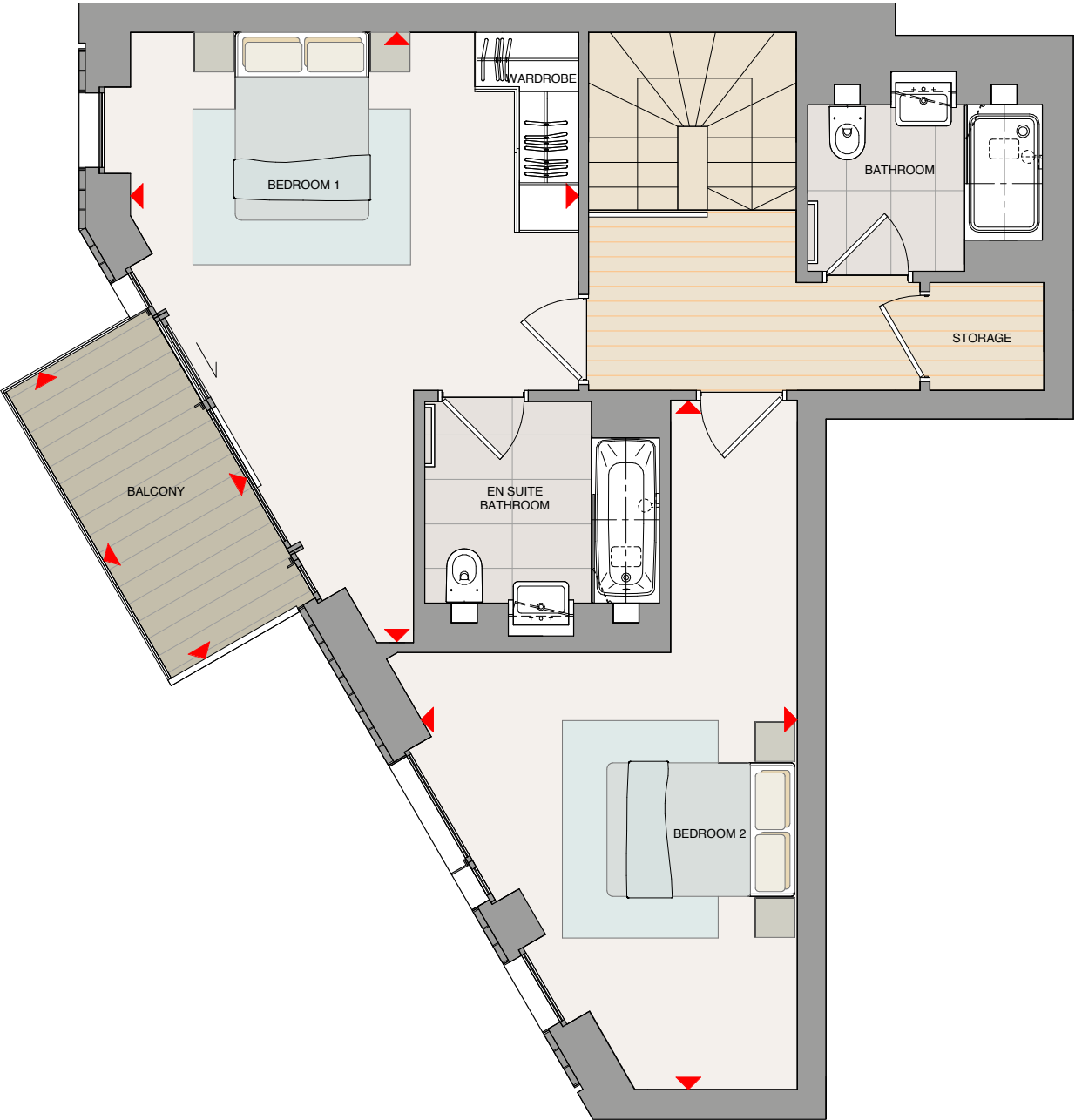
SITE LOCATOR



FLOOR STACKER



UPPER LEVEL



Apartment layouts provide approximate measurements and are indicative only. Dimensions, which are taken from the indicated points of measurement are for guidance only and are not intended to be used for carpet sizes, appliance space or items of furniture. Apartment areas are provided as gross internal areas under the RICS measuring practice. All measurements and areas may vary within a tolerance of 5%. Kitchen layouts are indicative only and are subject to change. All balcony dimensions and areas are approximate and may vary within a tolerance of 10% subject to detailed design.

KEY WM Washing Machine
▶ Dimension Arrows



—
WATERFRONT II
FLOORPLANS
—

2 BEDROOM DUPLEX
PREMIUM APARTMENT

TYPE 2.4.33

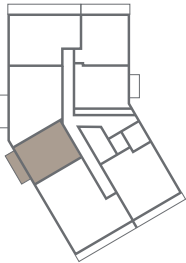
PLOT 3.17.291

APARTMENT AREA	106.16 sq.m	1143 sq.ft
Living/Dining	5230mm x 4155mm	17'2" x 13'8"
Kitchen	3300mm x 2300mm	10'10" x 7'7"
Balcony	4730mm x 1665mm	15'6" x 5'6"

SITE LOCATOR

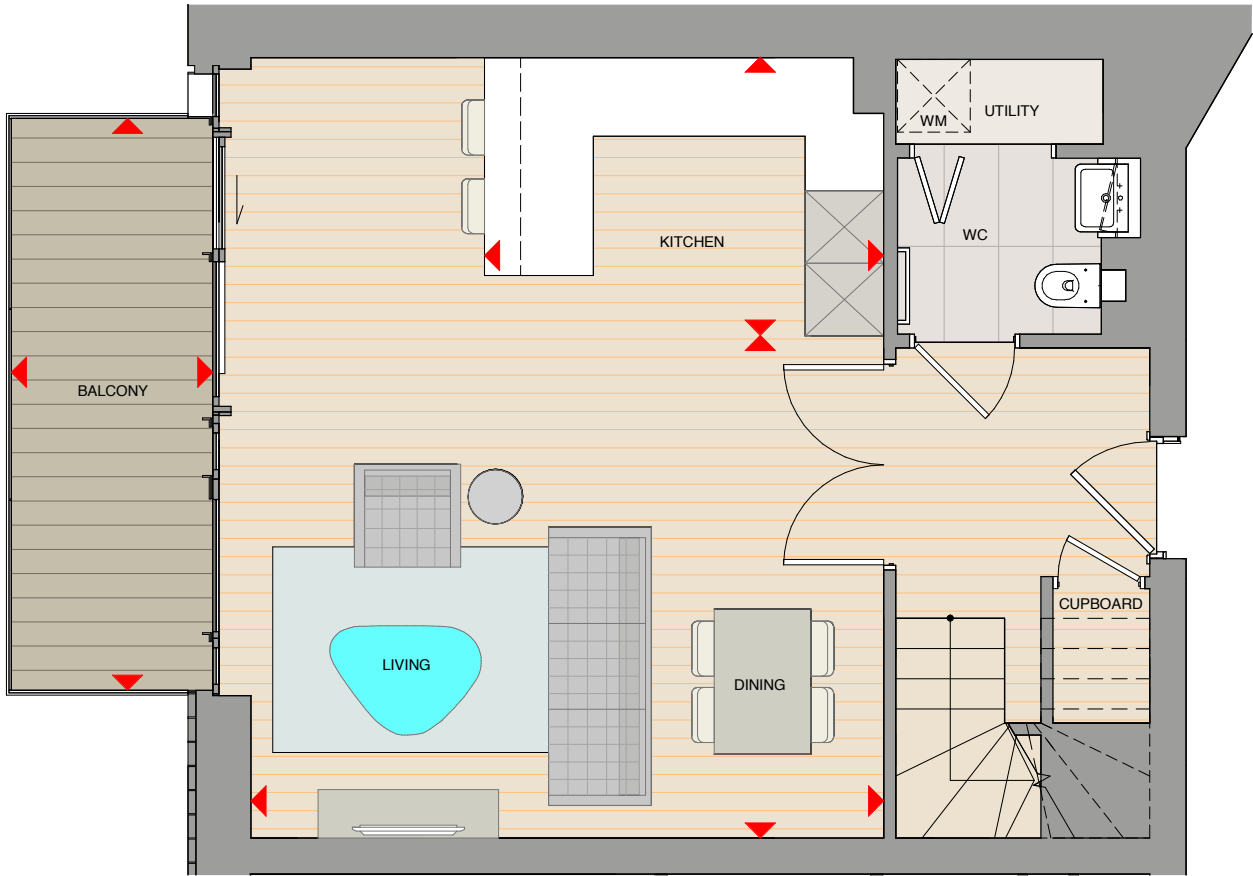


FLOOR STACKER



LEVEL 17

LOWER LEVEL



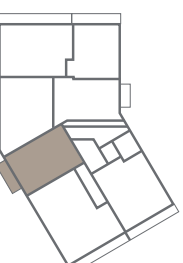
Apartment layouts provide approximate measurements and are indicative only. Dimensions, which are taken from the indicated points of measurement are for guidance only and are not intended to be used for carpet sizes, appliance space or items of furniture. Apartment areas are provided as gross internal areas under the RICS measuring practice. All measurements and areas may vary within a tolerance of 5%. Kitchen layouts are indicative only and are subject to change. All balcony dimensions and areas are approximate and may vary within a tolerance of 10% subject to detailed design.

KEY WM Washing Machine
▶ Dimension Arrows

SITE LOCATOR

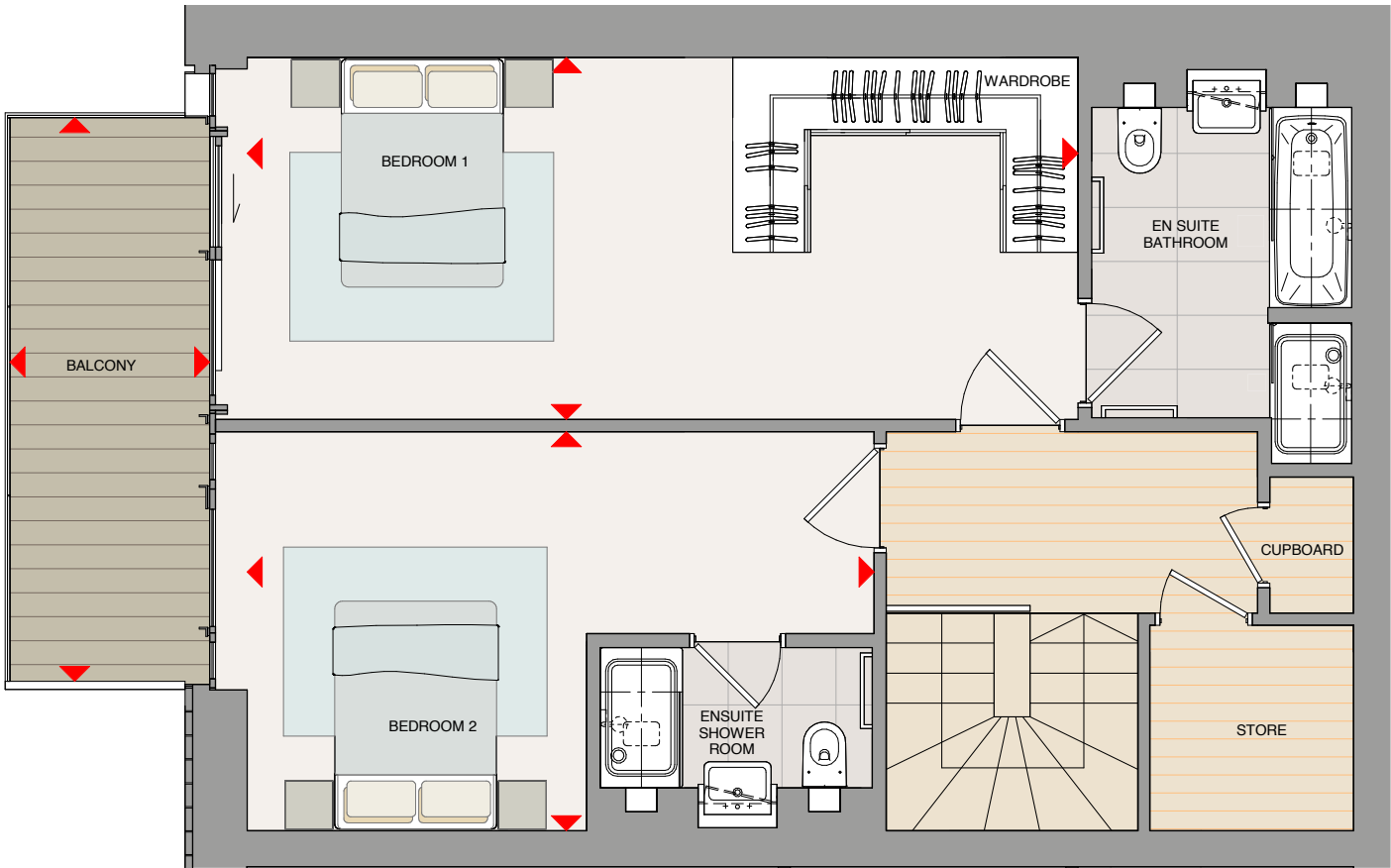


FLOOR STACKER



LEVEL 18

UPPER LEVEL



Apartment layouts provide approximate measurements and are indicative only. Dimensions, which are taken from the indicated points of measurement are for guidance only and are not intended to be used for carpet sizes, appliance space or items of furniture. Apartment areas are provided as gross internal areas under the RICS measuring practice. All measurements and areas may vary within a tolerance of 5%. Kitchen layouts are indicative only and are subject to change. All balcony dimensions and areas are approximate and may vary within a tolerance of 10% subject to detailed design.

KEY WM Washing Machine
▶ Dimension Arrows

Contact Us
L2 International
Tel/ Whatsapp: (852) 6826 7226
Email:info.hk@L2international.com

